

# **APPENDIX A      ILLUSTRATIVE MATERIAL**



**LEGEND:**  
— THE PRECINCT

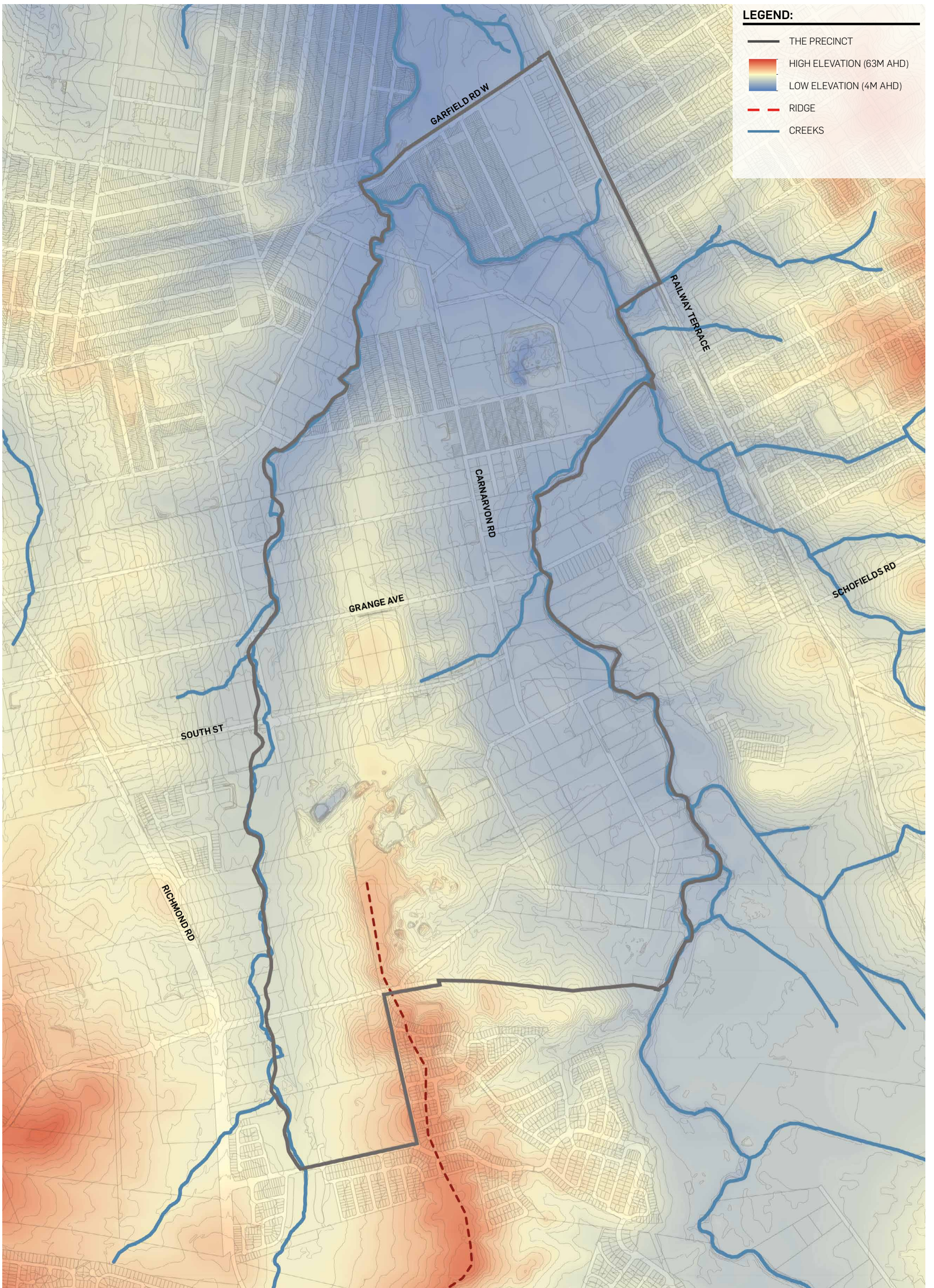


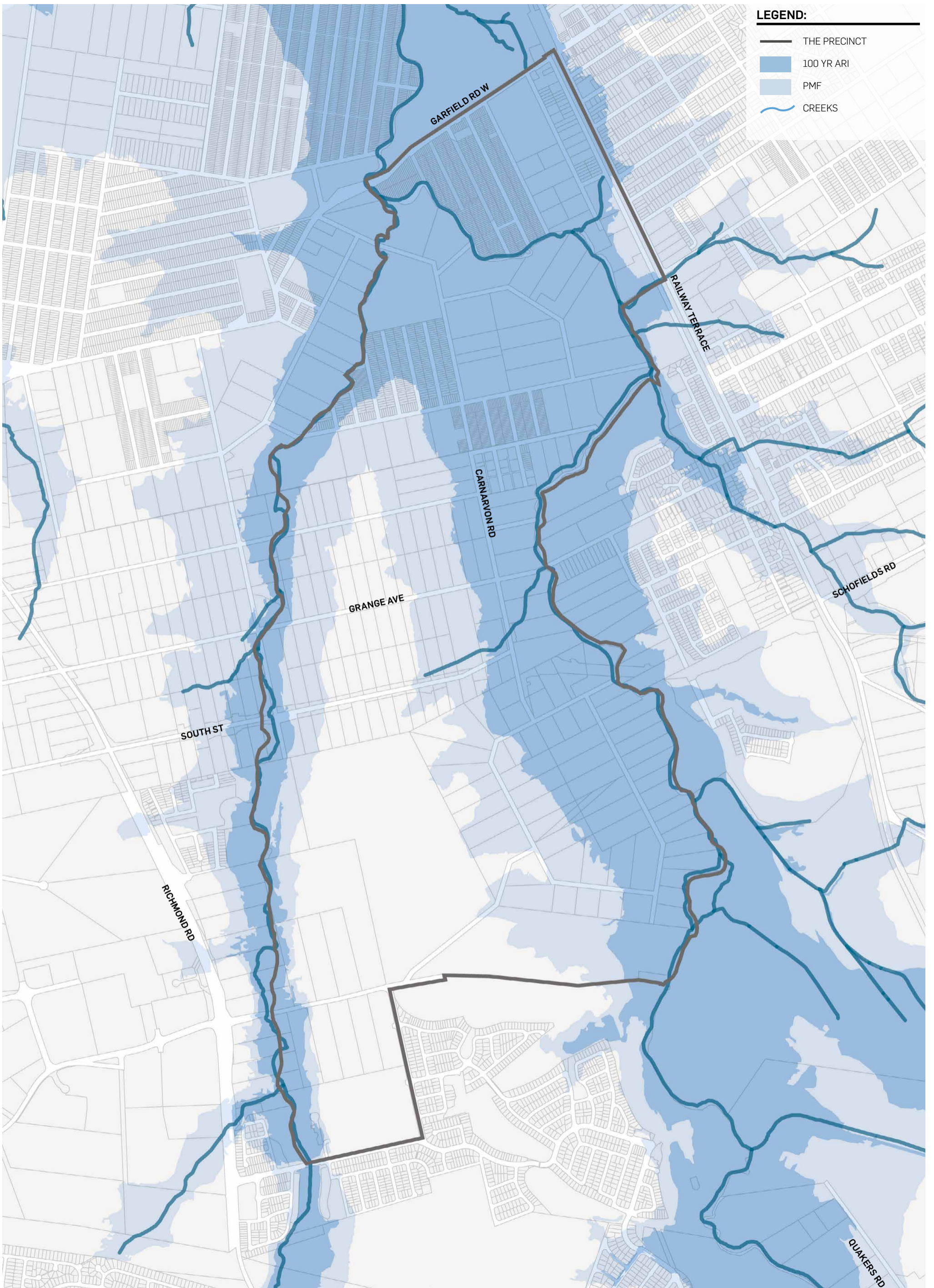
# WEST SCHOFIELDS PRECINCT MASTER PLANNING

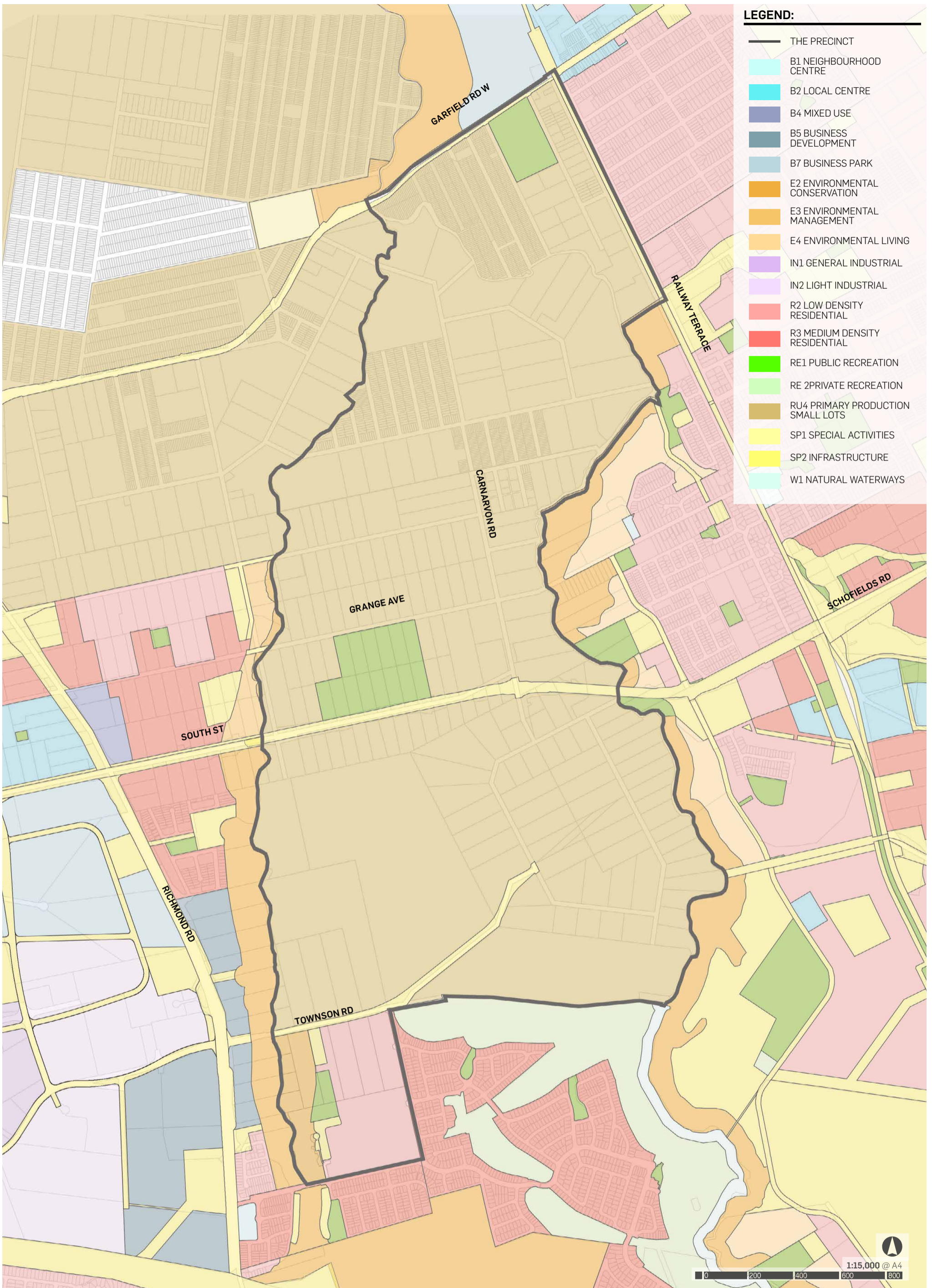
## AP-1: AERIAL PHOTOGRAPH

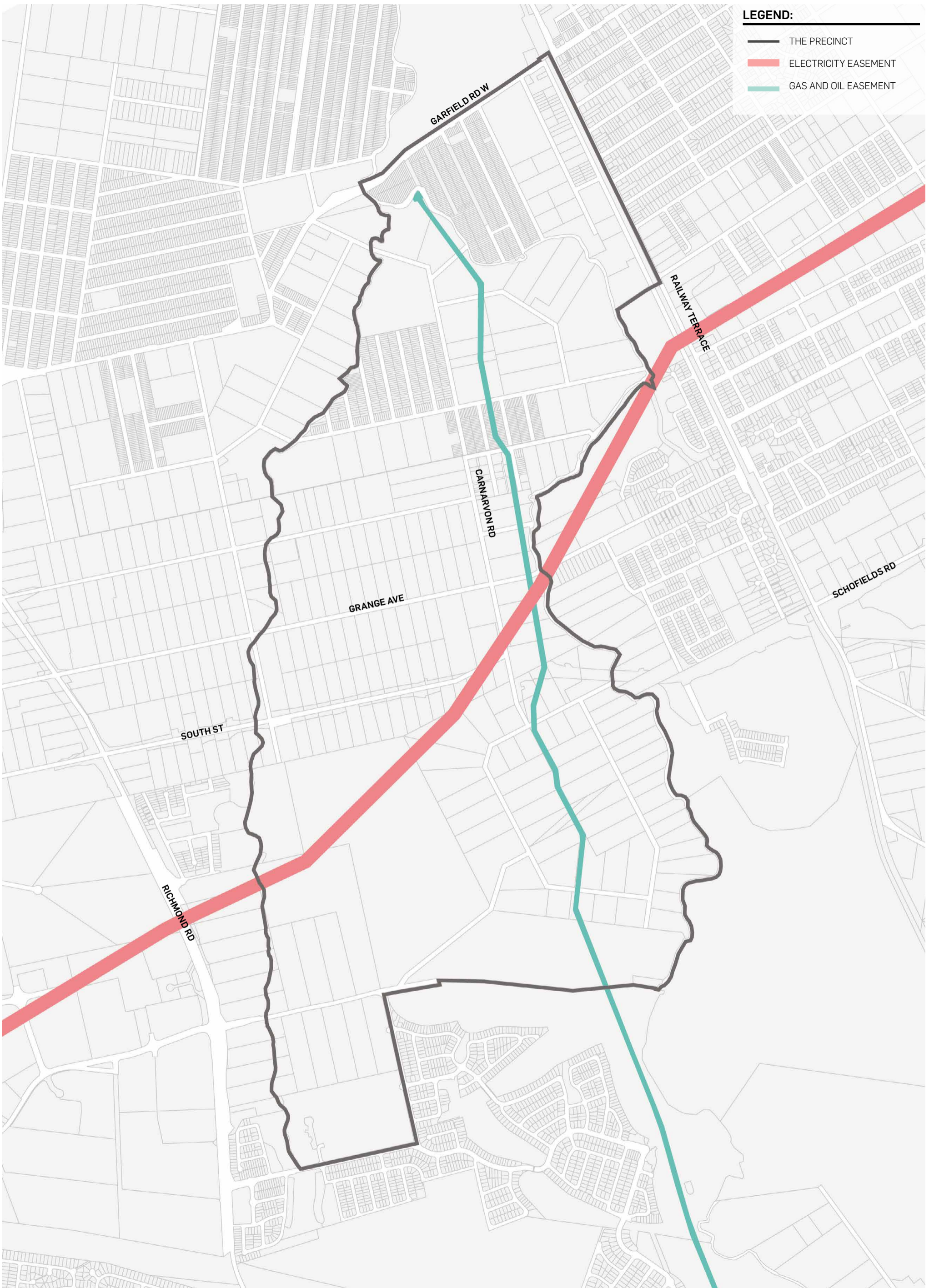
DATE: 15.05.2018  
JOB NO: ND1567  
DWG NO: AP1-001  
REV: C

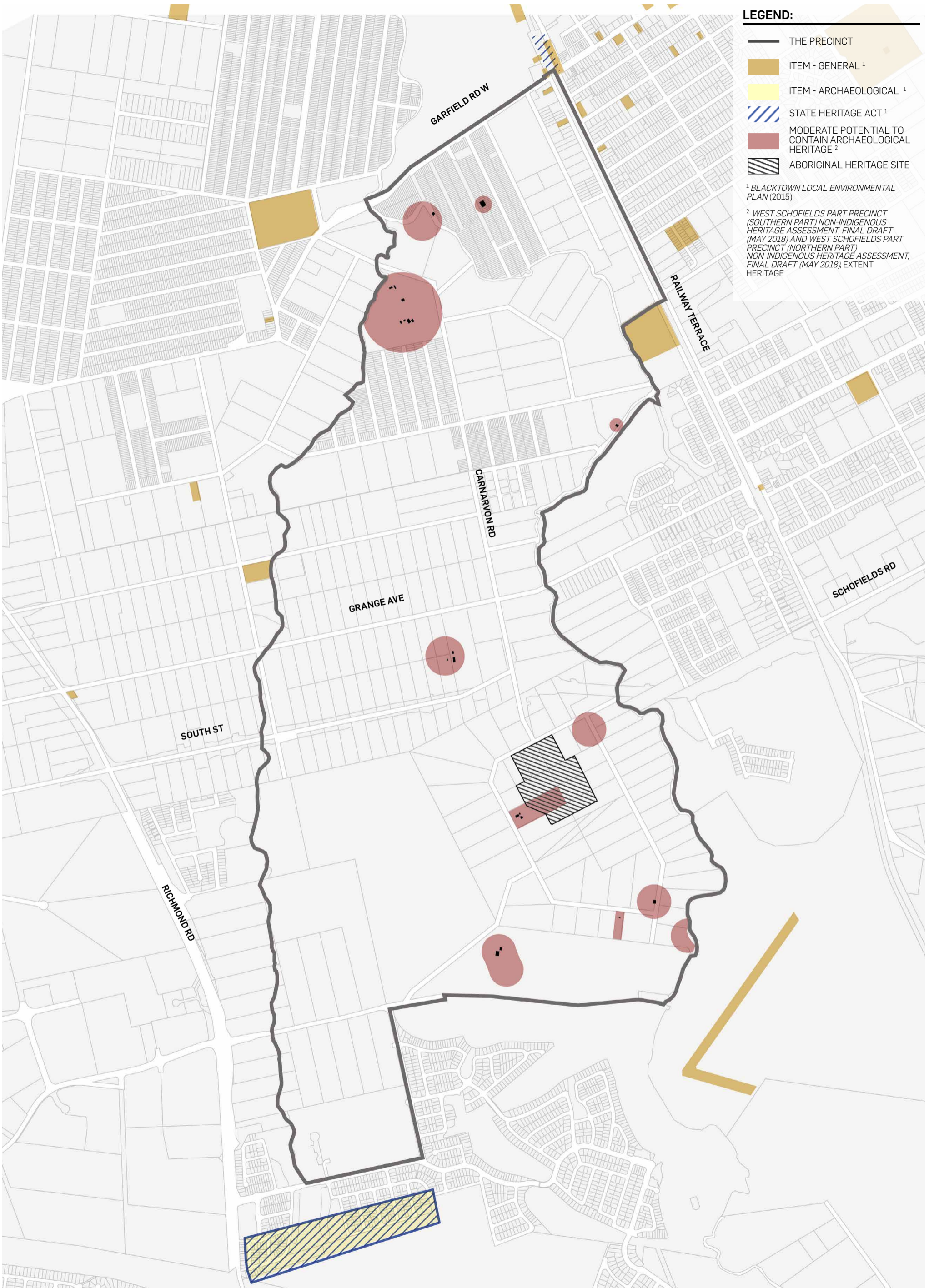


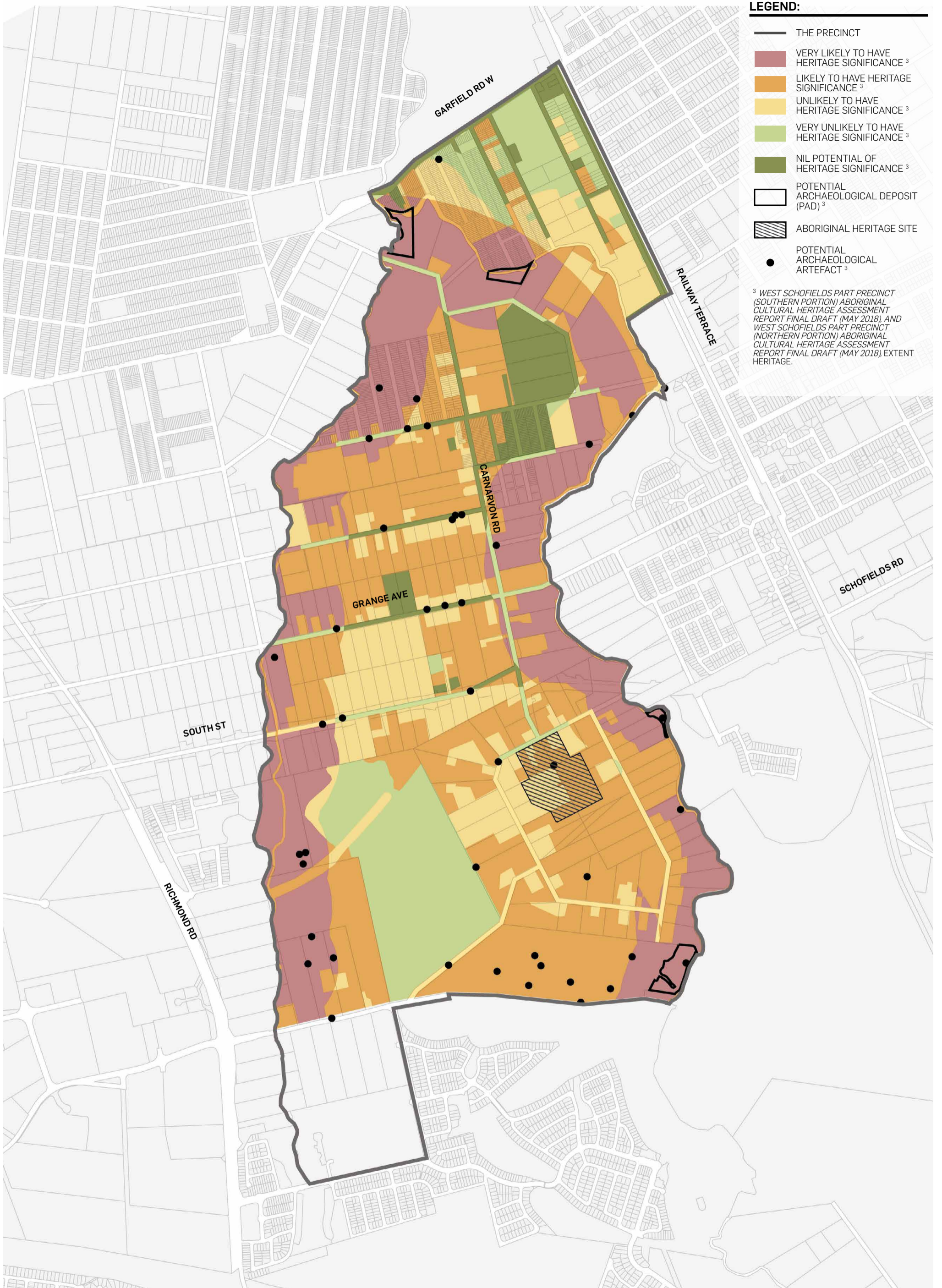








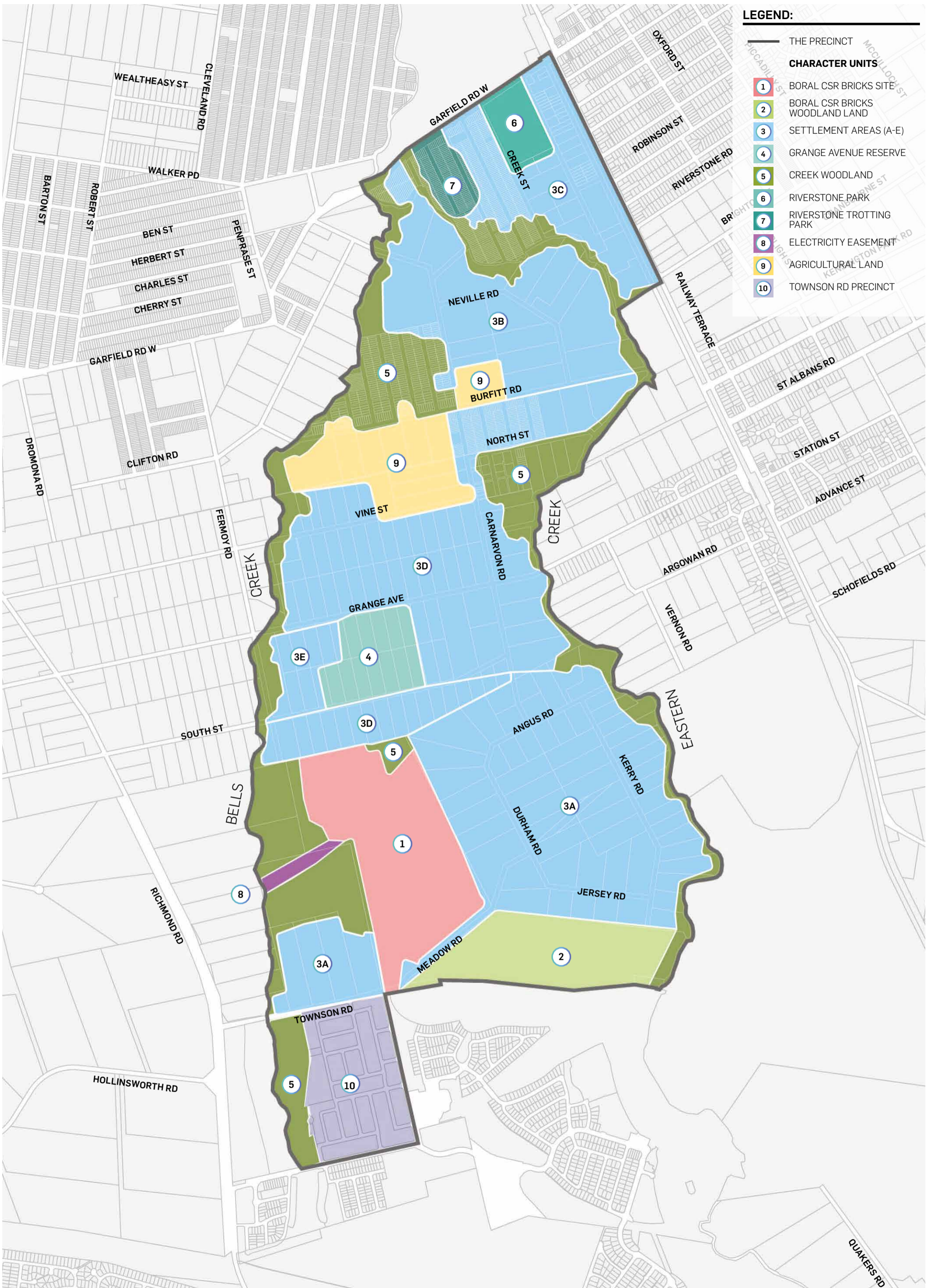


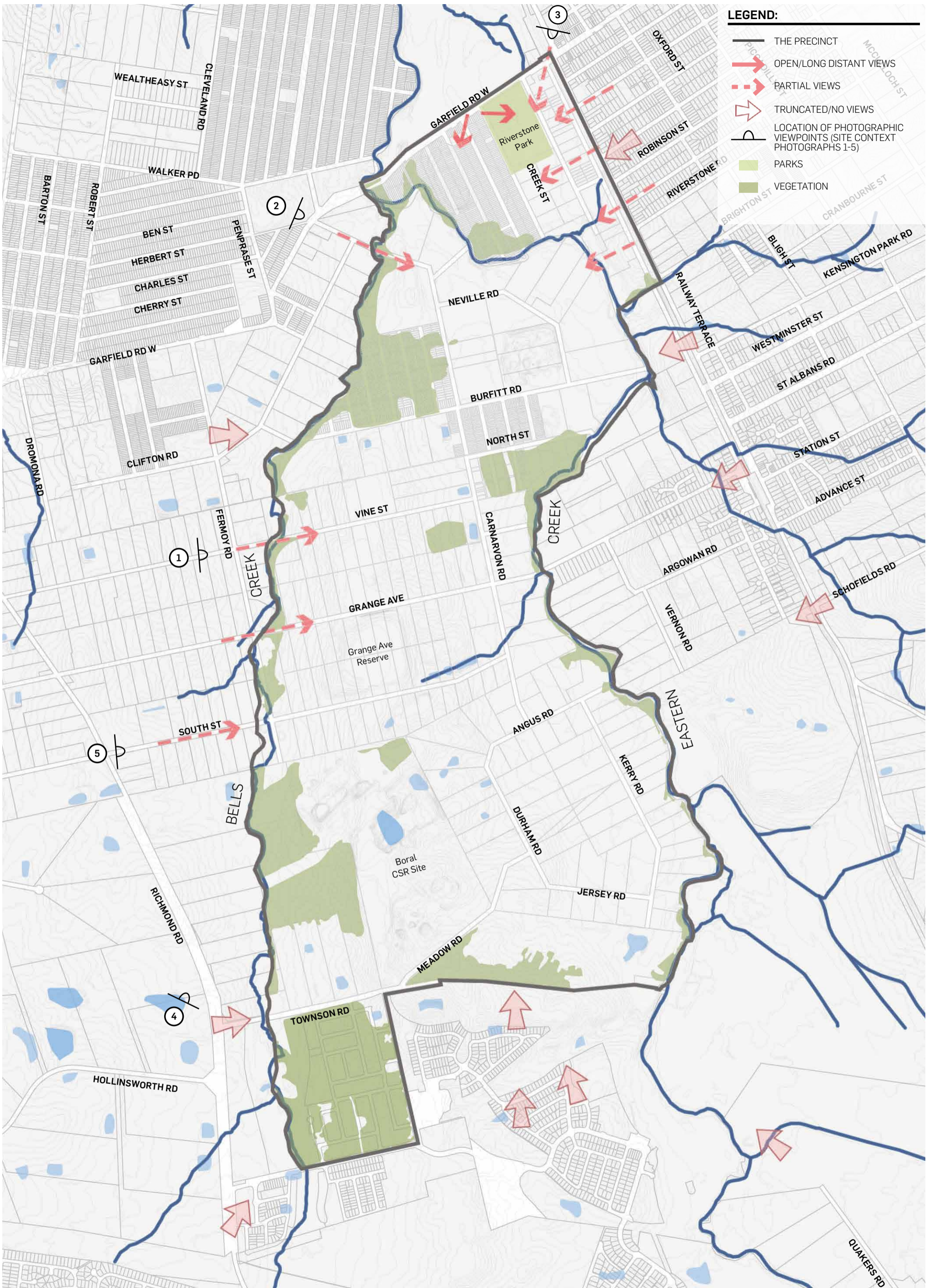


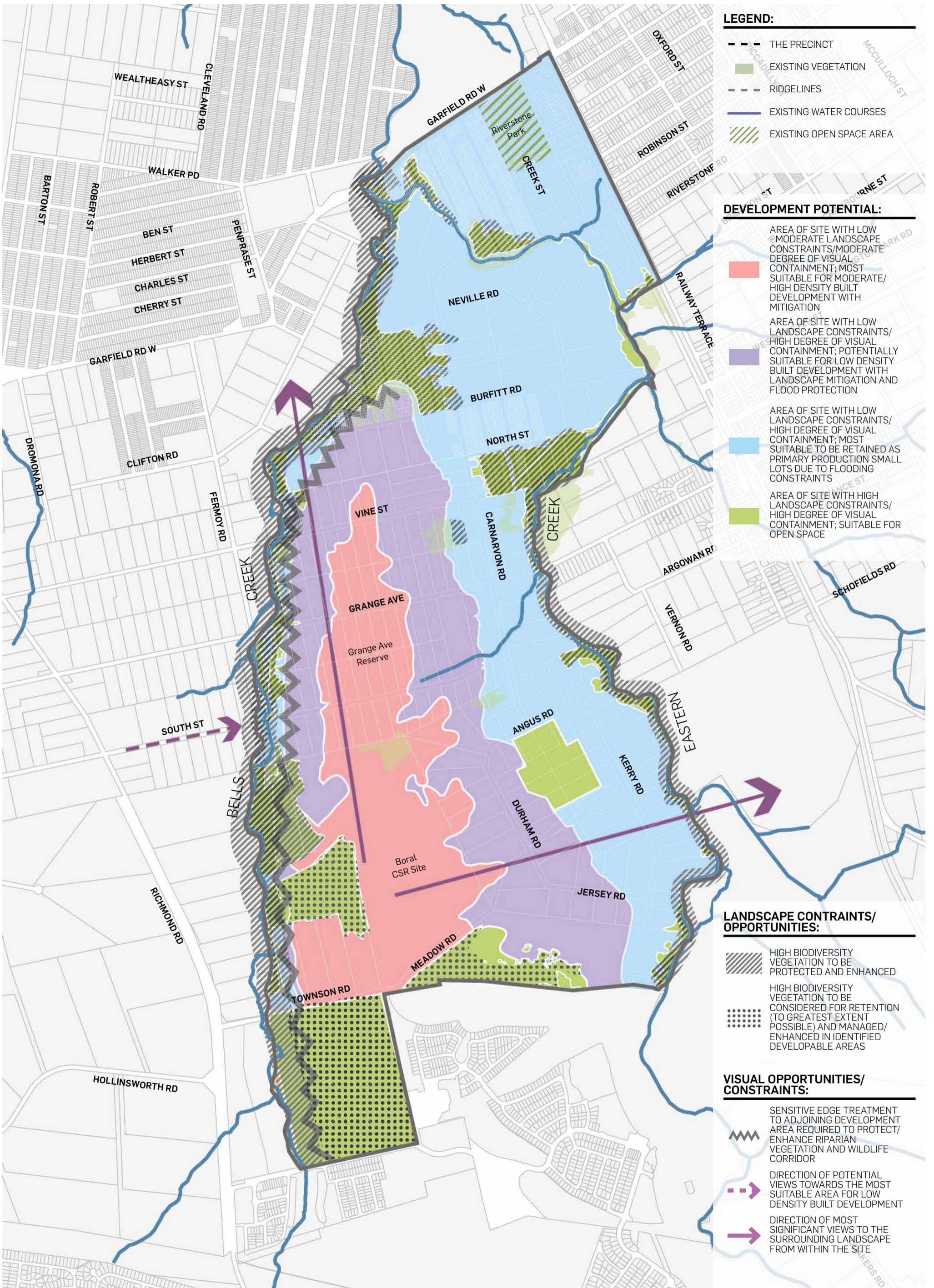
- LEGEND:**
- THE PRECINCT
  - VERY LIKELY TO HAVE HERITAGE SIGNIFICANCE<sup>3</sup>
  - LIKELY TO HAVE HERITAGE SIGNIFICANCE<sup>3</sup>
  - UNLIKELY TO HAVE HERITAGE SIGNIFICANCE<sup>3</sup>
  - VERY UNLIKELY TO HAVE HERITAGE SIGNIFICANCE<sup>3</sup>
  - NIL POTENTIAL OF HERITAGE SIGNIFICANCE<sup>3</sup>
  - POTENTIAL ARCHAEOLOGICAL DEPOSIT (PAD)<sup>3</sup>
  - ABORIGINAL HERITAGE SITE
  - POTENTIAL ARCHAEOLOGICAL ARTEFACT<sup>3</sup>

<sup>3</sup> WEST SCHOFIELDS PART PRECINCT (SOUTHERN PORTION) ABORIGINAL CULTURAL HERITAGE ASSESSMENT REPORT FINAL DRAFT (MAY 2018), AND WEST SCHOFIELDS PART PRECINCT (NORTHERN PORTION) ABORIGINAL CULTURAL HERITAGE ASSESSMENT REPORT FINAL DRAFT (MAY 2018), EXTENT HERITAGE.



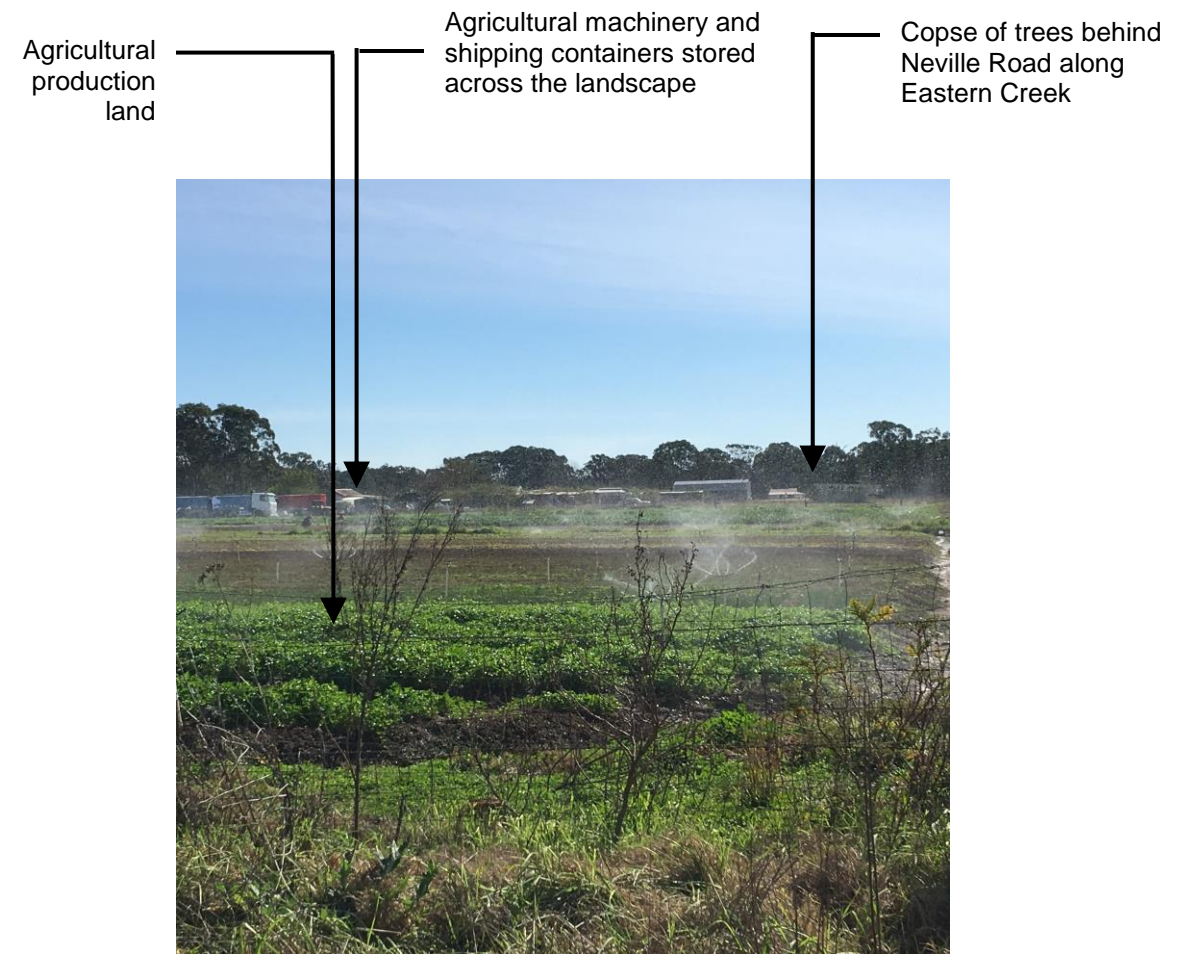








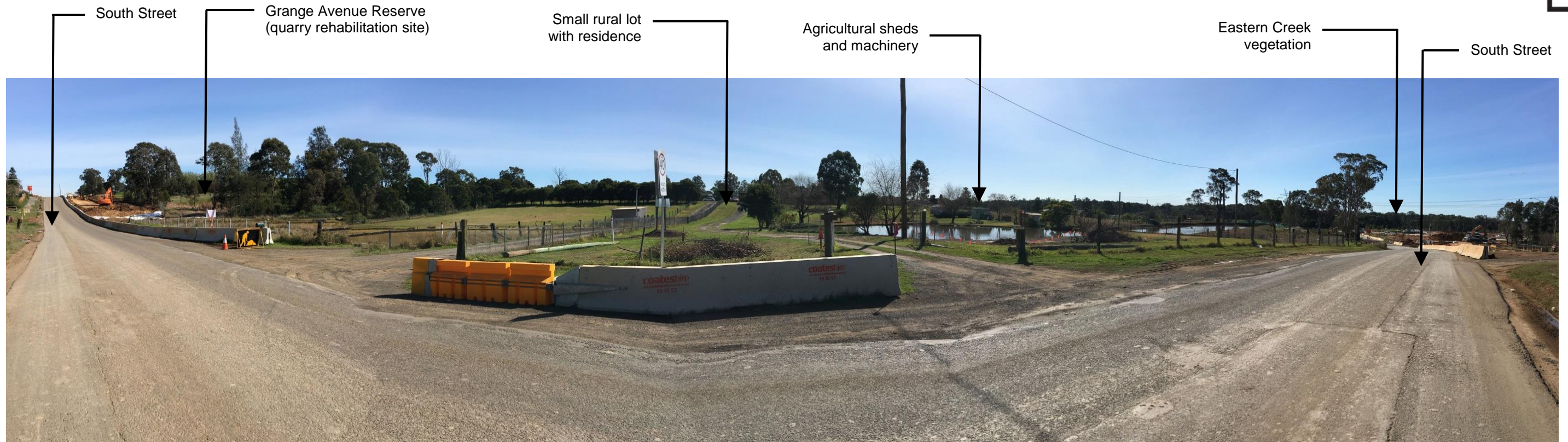
Site Appraisal Photograph A: View from Neville Road looking south-west



Site Appraisal Photograph B: View from Burfitt Road looking north



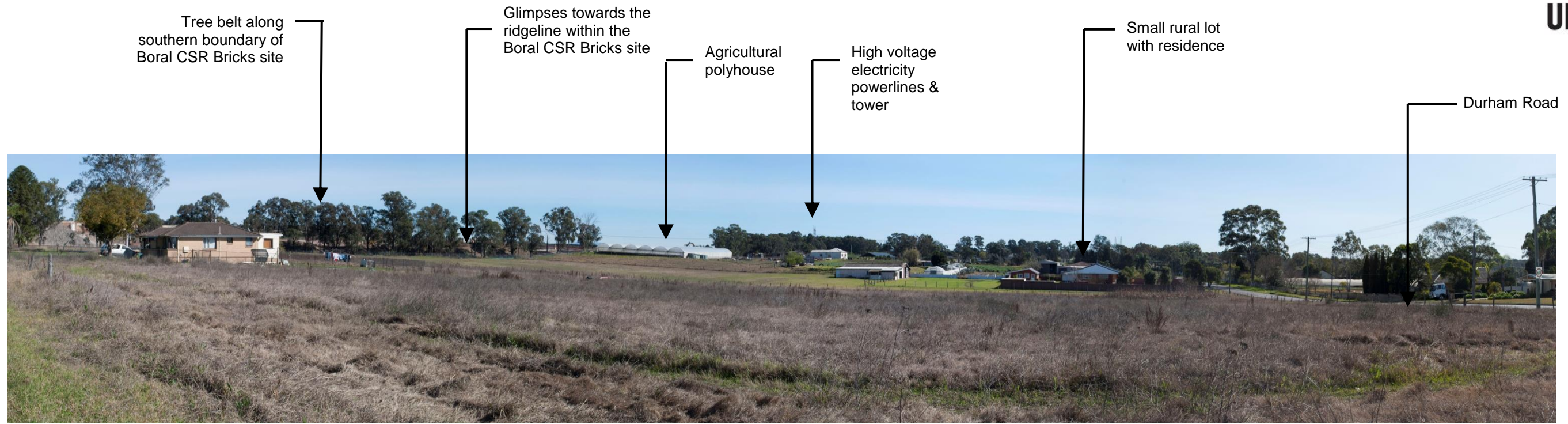
Site Appraisal Photograph C: View from South Street looking west towards Richmond Road



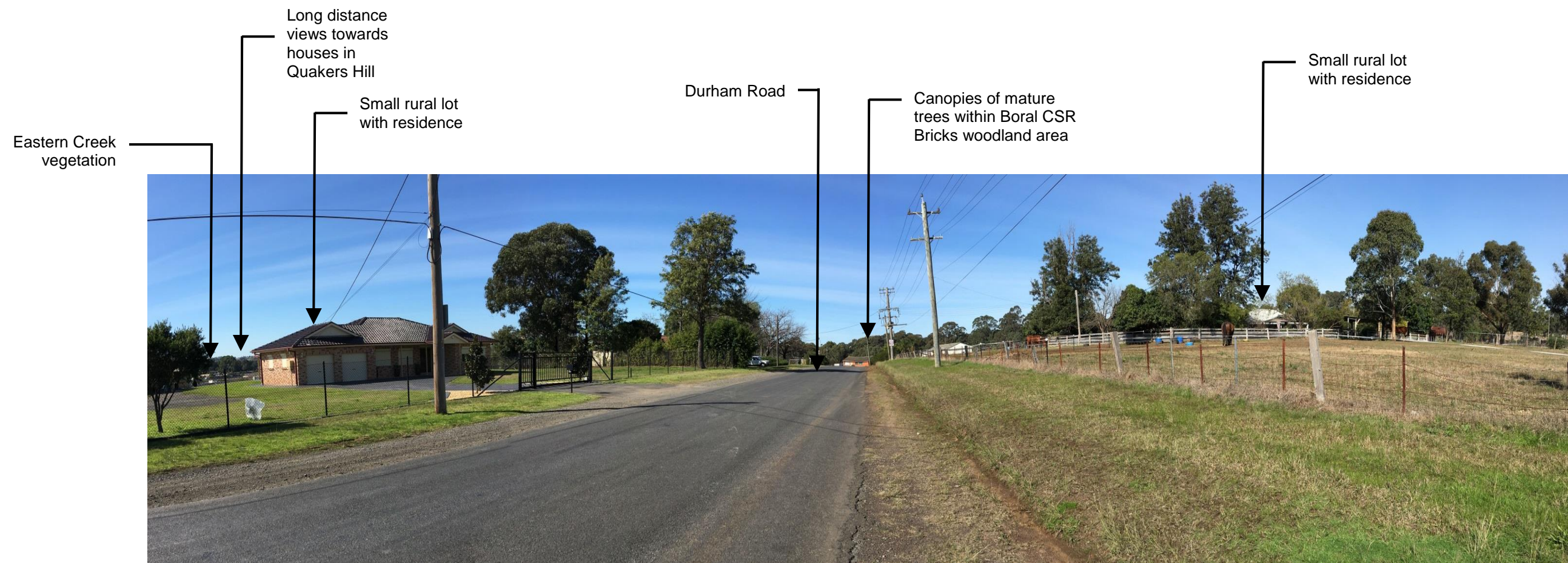
Site Appraisal Photograph D: View from South Street looking north across the Precinct



Site Appraisal Photograph E: View looking south-west towards the Boral CSR Bricks site from Angus Road



Site Appraisal Photograph F: View looking north-west from the intersection of Durham and Meadow Roads



Site Appraisal Photograph G: View looking south-east along Durham Road

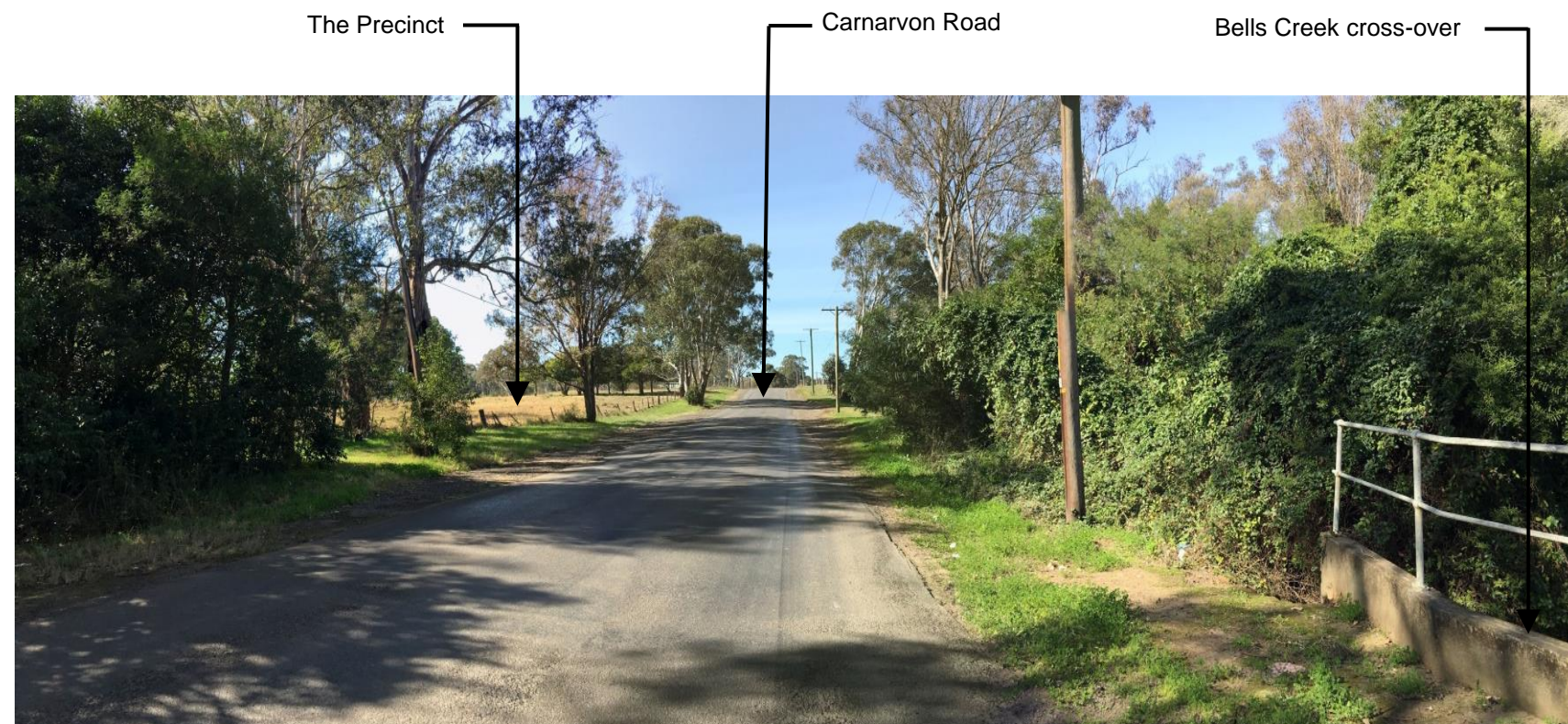
Eastern Creek vegetation  
Kerry Road  
Long distance views towards houses in Colebee  
Canopies of mature trees within Boral CSR Bricks woodland area  
Southern boundary of the Boral CSR Bricks site  
Durham Road  
High voltage electricity tower



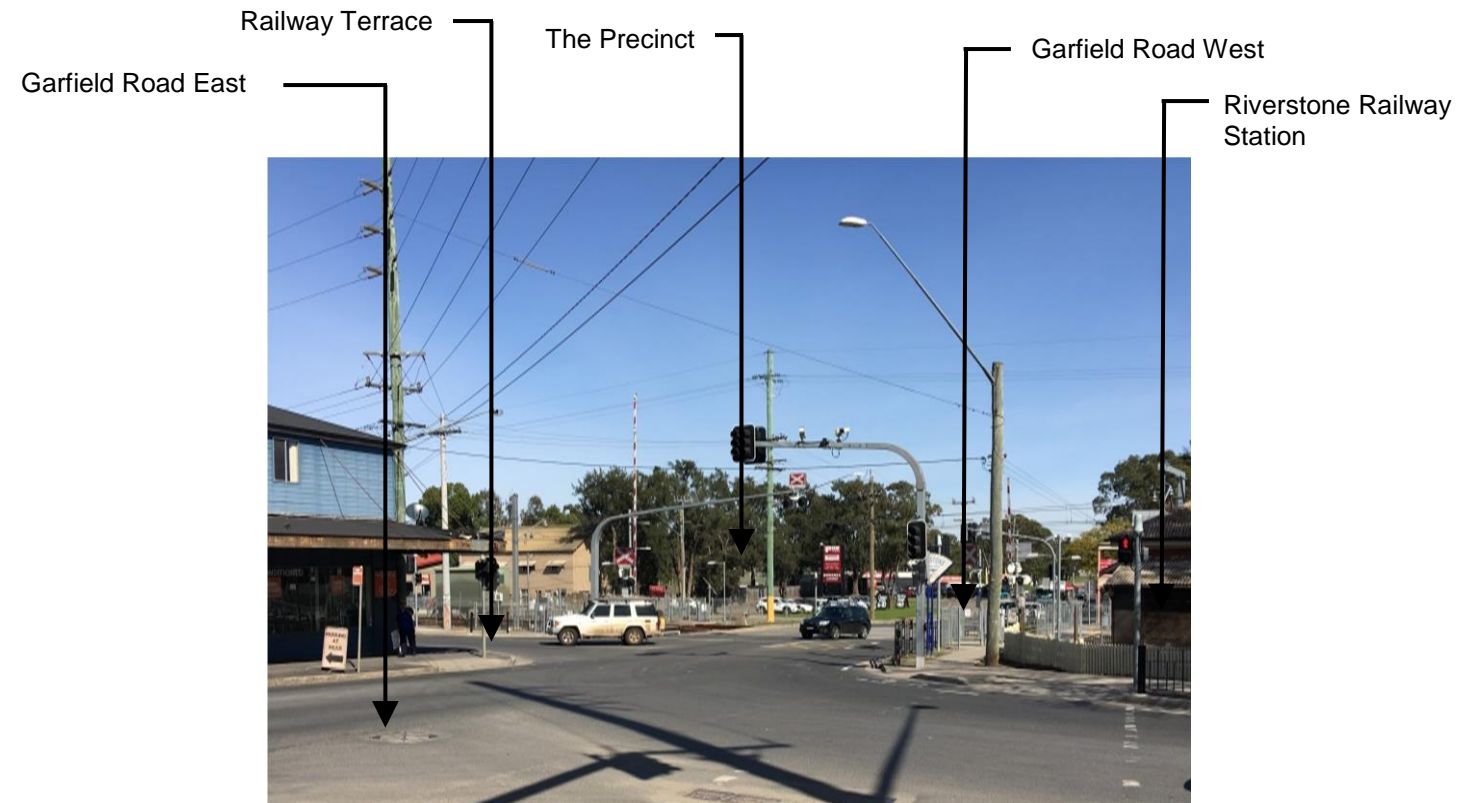
Site Appraisal Photograph H: View looking south-west from Kerry Road



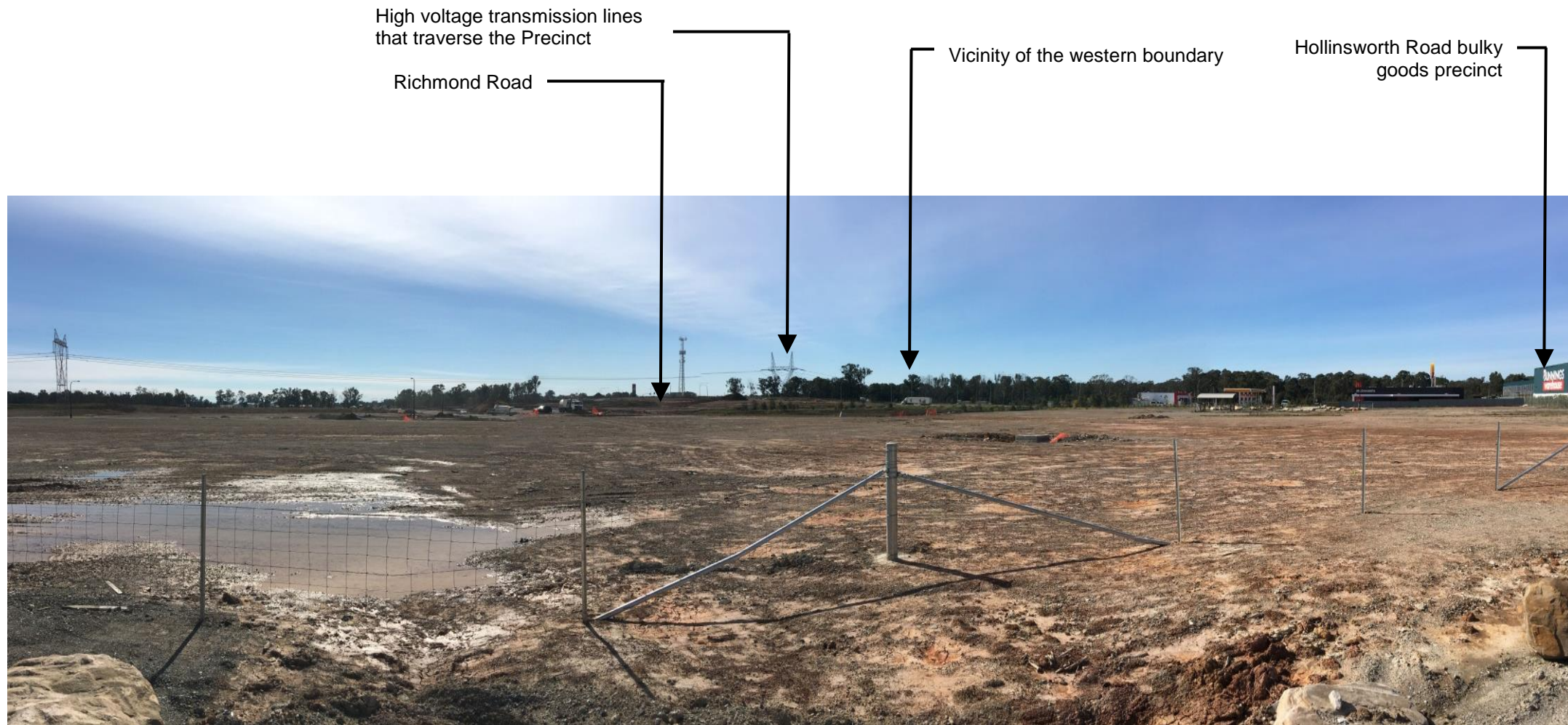
Site Context Photograph 1: View from intersection of Fermoy Road and Vine Street West looking east towards the Precinct



Site Context Photograph 2: View from Bells Creek cross-over along Carnarvon Road towards north-western boundary of the Precinct



Site Context Photograph 3: View from corner of Riverstone Parade and Garfield Road East looking south-west towards the Precinct



Site Context Photograph 4: View looking north-east towards the Site from Hollinsworth Road bulk retail precinct



Site Context Photograph 5: View looking east towards the Precinct from South Street





### **BRISBANE**

Level 7, 123 Albert Street  
Brisbane QLD 4000  
Australia  
T +61 7 3007 3800

### **MELBOURNE**

Level 12, 120 Collins Street  
Melbourne VIC 3000  
Australia  
T +61 3 8663 4888

### **PERTH**

Level 14, The Quadrant  
1 William Street  
Perth WA 6000  
Australia  
T +61 8 9346 0500

### **SYDNEY**

Level 23, Darling Park Tower 2  
201 Sussex Street  
Sydney NSW 2000  
Australia  
T +61 2 8233 9900